

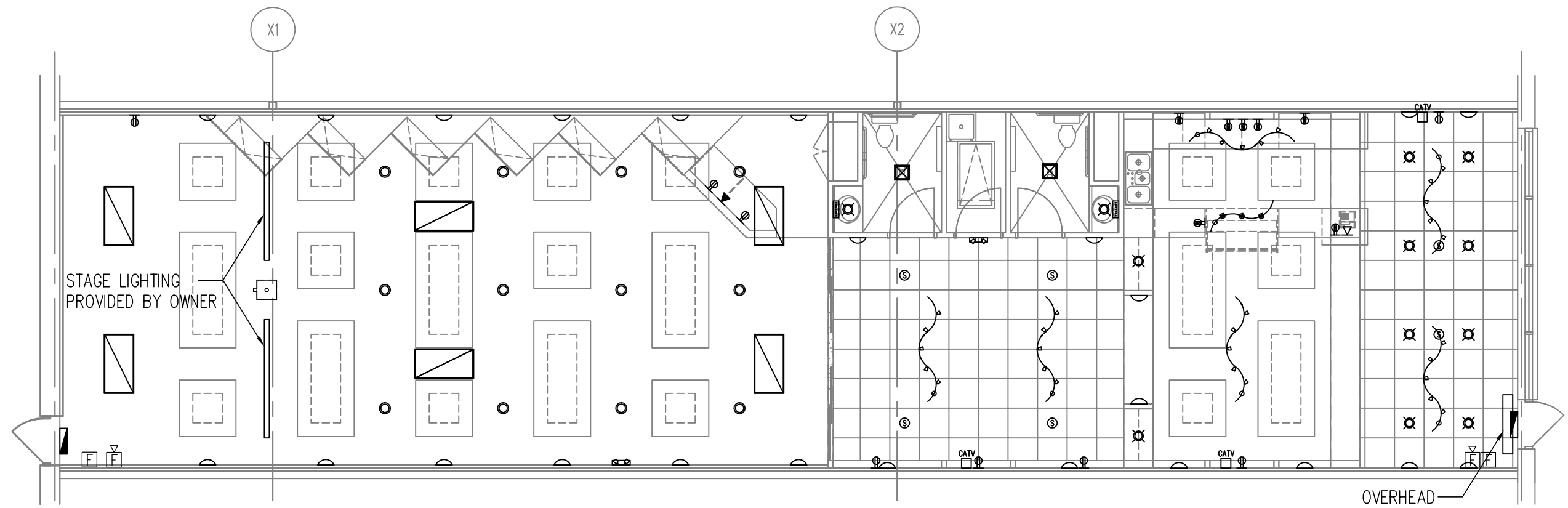
# LEGEND

- ⊗ 6" DELUXE UNIVERSAL TC HOUSING BY JUNO MODEL #TC2/25B-WH
- ▭ 2'X4' LINEAR FLOURESCENT HIGH BAY BY LSI INDUSTRIES MODEL #MX 4 54 SS5HO UE LM841 "BLACK FINISH"
- ⊠ FAN/LIGHTS BY BROAN MODEL# 679 70CFM
- ∩ WALL SCNCE; BELFORTE BY ALFA MODEL # WL123 BRZAME
- ⌒ 8' LINE VOLTAGE 5 LIGHT KIT WITH SP11 FIXTURES BY ALFA MODEL # MLKD3 STN AMB
- ⌒ 4' MOMOLINE KIT WITH P202 FIXTURES BY ALFA MODEL # MLKP1S STN AMB
- ▭ EXISTING EMERGENCY EXIT SIGN
- ⌚ EMERGENCY BATTERY LIGHT FIXTURE BY EMERGI-LITE MODEL# LSM54-2
- 9" PENDANT CYLINDER DOWNLIGHT MODEL TO BE DETERMINED

- ⊕ INDICATES DUPLEX RECEPTACLE VERIFY HT.
- ⊕ INDICATES GFCI DUPLEX RECEPTACLE VERIFY HT.
- ⊙ INDICATES CLG. SPEAKER
- ◻ INDICATES CLG. MTD. PROJECTOR
- ⌚ INDICATES POINT OF USE ELEC. WATER HEATER
- CATV ◻ INDICATES CABLE TELEVISION OUTLET VERIFY HT.
- ⚡ INDICATES TELEPHONE JACK
- ▲ INDICATES DATA/LAN OUTLET
- ⊠ INDICATES PULL STATION FIRE ALARM
- ⊠ INDICATES FIRE ALARM HORN AND/OR STROBE

# GENERAL NOTE

1. PROVIDE/INSTALL ACOUSTICAL SEALANT AND OUTLET BACKER PADS AT RECEPTACLE/ OUTLET/SWITCH LOCATIONS



## LIGHTING & POWER PLAN

SCALE: 1/8" = 1'-0"

<b>E2</b> <small>DRAWING NUMBER</small>	<small>PROJECT TITLE</small> <b>INTERIOR RENOVATIONS TO CAFE SOHA</b> <small>LOCATED AT</small> 257 HERSHEY ROAD HUMMELSTOWN, PA 17036	<small>REVISIONS</small> DATE JANUARY 18, 2011 DRAWN BY BRR <small>PROJECT NUMBER</small> _____	<small>DRAWING TITLE</small> <b>LIGHTING &amp; POWER PLAN</b> <small>SCALE</small> AS NOTED
<small>OWNER</small> CROSSPOINT UNITED METHODIST CHURCH <small>ADDRESS</small> 430 COLONIAL ROAD HARRISBURG, PA 17109 <small>FAX</small> (717) 545-4760		<small>PROJECT COORDINATOR</small> JASON MACKAY <small>PROJECT MANAGER</small> RAY WRIGHT <small>PROJECT DESIGNER</small> BRIAN RUMMEL	
ALL DIMENSIONS AND EXISTING CONDITIONS SHALL BE CHECKED AND VERIFIED AT THE SITE BY THE CONTRACTOR.			